

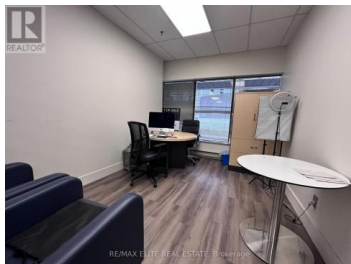
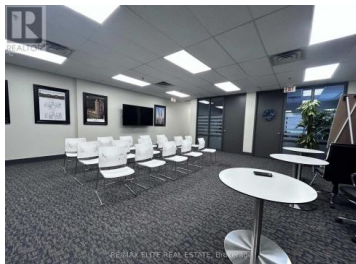


165 East Beaver Creek Road 16 Richmond Hill Beaver Creek Business Park Ontario

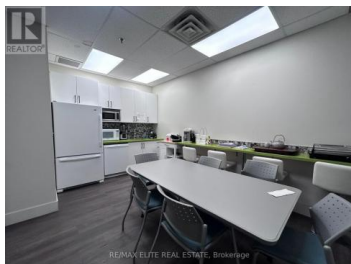
Beaver Creek Business Park

\$17

RE/MAX ELITE REAL ESTATE Brokerage



Gorgeous Fully Renovated Unit Within The Very Desirable Beaver Creek Business Park. Many Amenities Nearby, Close To Highway 404, 407 And Highway 7. 2 Private Offices + Open Area, Ideal For Many Uses. Shared washroom and Kitchen. The Unit Is Located In The Corner Giving It An Abundance Of Parking Space As Well As Three Exits. (id:6769)

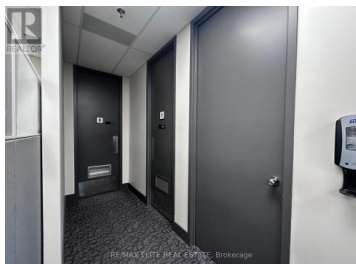
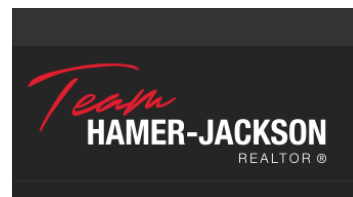


FENGXIA SHIRLEY JI

RE/MAX ELITE REAL ESTATE

Phone: (416) 561-5578

<http://www.ontarioagent.com/>



RE/MAX Kelowna
100-1553 Harvey Avenue
Kelowna, BC,
Canada