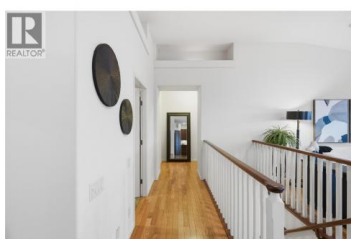




2213 Waddington Court 16 Kelowna British Columbia

Dilworth Mountain

\$1,088,800



Perched on desirable Dilworth Mountain within the sought-after Chilcote Villas townhome community, this exceptional 3-bedroom, 3-bathroom walkout end-unit offers privacy, views, and a true lock-and-go lifestyle. Nestled into protected greenspace, the home enjoys a private lake view, enhanced by its end-unit position and tranquil forest backdrop. The main level features an updated kitchen with quartz countertops, main-floor laundry, and a separate formal dining room that could easily function as a den or flex space. The adjacent great room showcases vaulted ceilings and floor-to-ceiling windows that frame the surrounding scenery. The kitchen offers easy access to the expansive upper deck overlooking the greenspace and lake, ideal for entertaining year-round with 240-volt power and a 4,000-watt overhead heater, making four-season outdoor living effortless. The primary suite is a private retreat with custom drapery and a luxurious 5-piece ensuite with heated floors. The walkout lower level includes two generously sized bedrooms, a dedicated office, wine room, spacious games room, ample storage, and access to a second deck capturing both the lake view and forest setting. Additional highlights include a double garage, parking for two vehicles on the driveway, and 240-volt power on both decks and in the garage. Ideally located just five minutes to UBCO, shopping, Kelowna General...



RE/MAX Kelowna
100-1553 Harvey Avenue
Kelowna, BC,
Canada

Krista Suchar

RE/MAX Kelowna

Phone: (250) 870-7653

<http://kristasuchar.com/>

