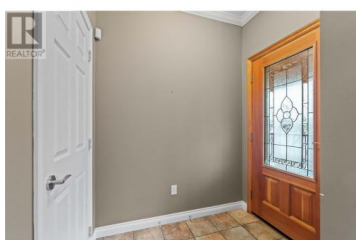


341 20th Street 16 Salmon Arm British Columbia

NE Salmon Arm

\$595,000



DESIRABLE PARKRIDGE TOWNHOME -This private 3-bedroom, 3-bathroom townhome +55 living offers an exceptional blend of comfort and convenience. Highlights include a double attached garage, main floor laundry, soaring 9' ceilings, and an abundance of natural light. The open-concept living space features a cozy gas fireplace up & an electric fireplace on lower level, a spacious primary suite with a large walk-through closet and a 4-piece ensuite, and a generous main-floor powder room for guests. The walkout lower level provides additional living space, while two private decks allow you to soak in the serene sounds of the ponds, fountains, and lush Shuswap forest. Ideally located with easy access to Turner Creek walking trails, Shaw Centre hockey arena, Salmon Arm Community Centre, and all the amenities of Uptown Salmon Arm, make this luxury townhome yours! (id:6769)

Cary Lentz

Century 21 Assurance Realty

Phone: (250) 517-7742

<http://carylentz.com/>



RE/MAX Kelowna
100-1553 Harvey Avenue
Kelowna, BC,
Canada