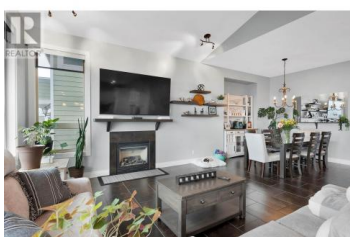
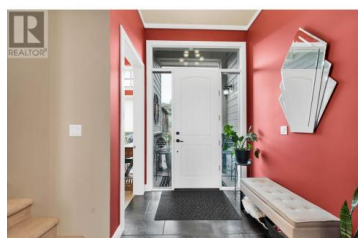




## 460 Azure Place 16 Kamloops British Columbia

Sahali

# \$1,300,000



A must to view this beautiful executive home in the bareland strata of Mesa Estates. This 16 year old home spanning just over 3500 sq. ft with panoramic views is located in a great central Sahali location close to all amenities. The main floor features a large front entrance with beautiful tile flooring throughout the main floor, 1 bedroom/den, high ceilings, livingroom/diningroom with gas fireplace, open concept island kitchen, main floor laundry and a 3 piece bathroom. Upstairs features 3 bedrooms, 5 piece ensuite with jetted soaker tub+ separate shower, walk-in closet and a beautiful sundeck to enjoy your morning coffee overlooking the panoramic views. Full walk-out basement with recroom, den, summerkitchen, 1 bedroom, 3 piece bathroom, separate laundry and a large covered patio. Other features include double garage with good parking in front and a nice yard. Includes 11 appliances, central air and central vac. A must to view! (id:6769)

**Helen Ralph**

RE/MAX Real Estate (Kamloops)

Phone: (250) 374-3331



**RE/MAX Kelowna**  
100-1553 Harvey Avenue  
Kelowna, BC,  
Canada