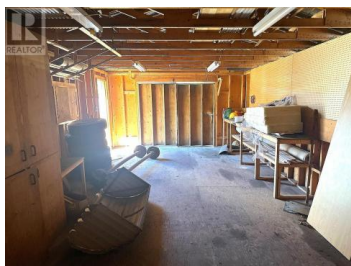




15401 Kalamalka Road 160 Coldstream British Columbia

Mun of Coldstream

\$104,900



Welcome to Lakeway Manufactured Home Park - a quiet and friendly 55+ adult-oriented community just a short walk to the stunning shores of Kalamalka Lake! This affordable fixer-upper offers excellent potential for a handy Buyer looking to downsize or retire in a peaceful and quiet location. Situated on a flat lot with lovely mountain, valley, and golf course views, this property includes a primary bedroom, larger-sized bedroom (previously two smaller rooms, now combined), an updated bathroom, and a bright living room with a large window and spot for a wall A/C unit. The oak Kitchen and Dining areas are in good condition and ready for your personal touches. Enjoy the bonus of a detached garage / workshop - perfect for tinkering or storage - plus a large garden shed, and ample parking for two vehicles. Both the front and back steps are newly built for easy access. This home is located just minutes from public transit, a grocery store, Polson Mall, and the Kal Beach Store. Pet lovers will appreciate that Dogs (under 18" long and 12" tall to the shoulder) and Cats are allowed, with Park approval. Pad rent for the new owner will be \$735/month. With a bit of TLC, this could be the ideal spot for a retiring senior looking for affordable, low-maintenance living near the Lake. Opportunities like this don't last - book your showing today and imagine the possibilities! (id:6769)



RE/MAX Kelowna
100-1553 Harvey Avenue
Kelowna, BC,
Canada

David Steenkamp

Royal LePage Downtown Realty

Phone: (778) 212-9994

<https://thesteenkampteam.com/>

