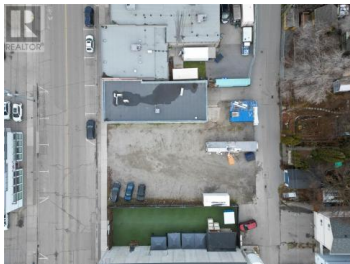
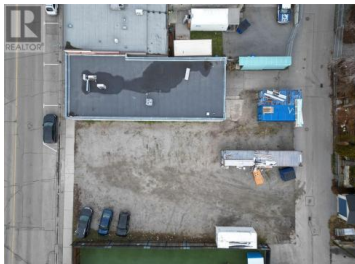




160/166 Ellis Street Penticton British Columbia

Main North

\$1,200,000



Prime Condo Development Opportunity Near Okanagan Lake,. Exceptional development site ideally located just steps from Okanagan Lake, downtown Penticton, and minutes to the renowned wineries of the Naramata Bench. This approximately 8,000 sq.ft. property is zoned C6, allowing for a building height of up to 21 meters with 100% lot coverage--offering excellent potential for a multi-unit residential or mixed-use development. Situated just northeast of Penticton Creek, the area boasts a high walk score of 93, making it a very walkable location where daily errands can be accomplished without a vehicle. The lot currently features a large parking area with fencing on the south side and an existing building on the north. The flat terrain makes for a straightforward development process. Contact your preferred real estate agent for further details. Duplicate listing MLS 10344682 Vacant Land (id:6769)

Jesse Chapman

Royal LePage Locations West

Phone: (250) 490-6178

<https://teamchapman.ca/>



RE/MAX Kelowna
100-1553 Harvey Avenue
Kelowna, BC,
Canada