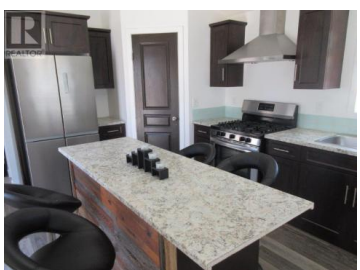




## 415 Commonwealth Road 163 Kelowna British Columbia

Lake Country East / Oyama

# \$305,000

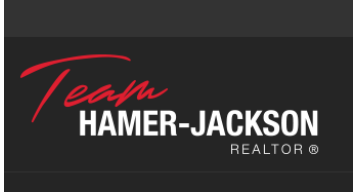


Enjoy the Sweetlife in this open concept Park Model! The high ceilings combined with lots of windows make this home feel spacious and inviting. Entertain in style in your large living area with mountain views. The kitchen features an island and pantry that gives you extra storage. Across the street is the new restaurant, "Thyme at Ellison" for your dining pleasure along with the outdoor pool, hot tub, coin laundry and playground for the younger visitors. Other amenities within Holiday Park Resort are pools, hot tubs, gym, hair salon, games room, billiards, woodworking shop, pickleball court plus more. Sublease term to 2035 with the option to extend to 2046 for an additional cost. The lease is registered with the Federal Government with the transfer of the Park Model by bill of sale. No Property Transfer Tax. Long and short term rentals allowed. The 2025 Maintenance Fee is \$5457 which includes security, water, sewer, use of the amenities, maintenance of the common areas and roads, snow removal and garbage disposal area. Maintenance Fees are due and payable in January of every year. Measurements are approximate. (id:6769)

**Marion Lahey**

Coldwell Banker Horizon Realty

Phone: (250) 860-7500



**RE/MAX Kelowna**  
 100-1553 Harvey Avenue  
 Kelowna, BC,  
 Canada