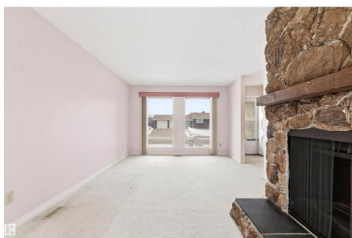




## Edmonton Alberta

Lorelei

# \$390,000



Welcome home to Lorelei, where charm, space, and everyday convenience come together effortlessly. This solid 1100 sqft bungalow is perfectly positioned in a mature, family-friendly neighbourhood 2 blocks to Mary Butterworth and Lorelei schools. Inside, you'll find 3 spacious bedrooms up, including a primary retreat with its own 2-piece ensuite, plus a full bath. The bright living room invites you in with a cozy fireplace, while the large kitchen is ready for everything from busy mornings to Sunday dinners. Downstairs, the possibilities expand with a full bath, hobby room, and an oversized rec room built for movie nights, play space, or hosting friends. Outside, enjoy a private fenced yard, deck for summer evenings, and an oversized double garage with back lane access. A home with great bones, space to grow, and a location you'll love. (id:6769)

### Victoria Rempel

RE/MAX Elite

Phone: (780) 266-0071

<https://www.victoriarempel.ca/>



RE/MAX Kelowna  
100-1553 Harvey Avenue  
Kelowna, BC,  
Canada