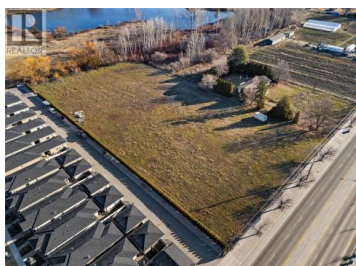
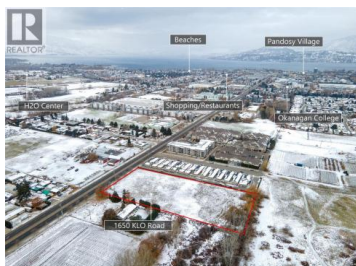




1650 KLO Road Kelowna British Columbia

Lower Mission

\$900



Prime 3.1-Acre Flat Lot - High-Exposure Location in Central Kelowna

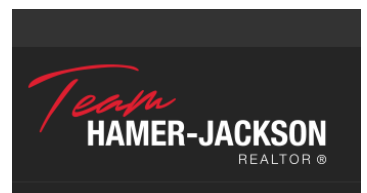
Exceptional opportunity to lease a rare, level 3.1-acre parcel with direct access off KLO Road. Located in a high-traffic corridor, this centrally located property offers outstanding visibility and accessibility—ideal for a range of commercial or agricultural operations. Zoned A1 (Agriculture), the property supports a variety of permitted uses including greenhouses, nurseries, animal clinics, kennels, stables, farm retail sales, and select home-based businesses. The flat topography and open layout provide maximum flexibility for site planning and development. Park area designated behind this property. This property has access off of KLO Rd. with 252 feet of road frontage. Capitalize on one of Kelowna's few remaining large-acreage lease opportunities in a strategic location. (id:6769)

Amir Shahidi

Royal LePage Kelowna

Phone: (250) 801-7810

<http://www.shahidi.ca/>



RE/MAX Kelowna
100-1553 Harvey Avenue
Kelowna, BC,
Canada