



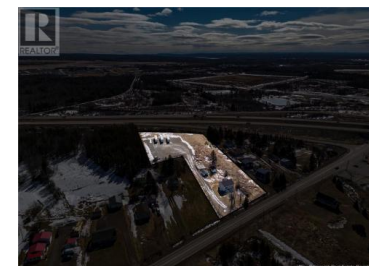
REALTOR®



**Moncton New Brunswick**

**\$749,000**

New Brunswick Real Estate Board



Highway Commercial Land for Sale in Moncton, NB! Located at 1656 Shediac Rd, Moncton, NB., this 2.79 acres parcel of land borders HWY 2 and Shediac rd. Key feature is the 1 acre of compacted yard ideal for truck/trailer parking and/or storage. Other benefits included: -Excellent exposure on Shediac Rd and directly visible from Hwy 2. -Easy highway access: perfect for logistics and transportation businesses. -Ample yard space for storage, equipment, or fleet parking. Bonus: Residential house included great for rental income. This is a rare opportunity to own a strategic commercial property in a high-traffic area. Contact for more details (id:6769)

**Sebastien Gagnon**

RE/MAX Quality Real Estate Inc.

Phone: (506) 588-0868

<http://www.sebgagnon.com/>



RE/MAX Kelowna  
100-1553 Harvey Avenue  
Kelowna, BC,  
Canada