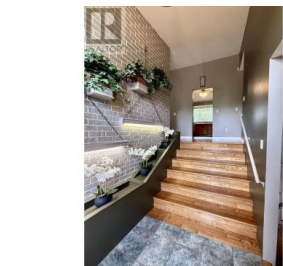




16795 HART Highway Prince George British Columbia
\$1,699,900



Welcome to the "Johnson Farm" with the 2 towering silos, here's your chance to own an iconic Prince George landmark! This opportunity boasts 3 houses on 3 separate titles and a combined 80 acres (50 in Hay). The main house (on 1 acre) is nearly 2,000 sqft per floor with 5 bed, 3 bath and a single car garage with a fully finished basement. Home #2 is an double wide mobile on a basement (1.29 acres) 3 bed, 2 bath. Home #3 is the original homestead (cute and updated) with 4 beds 1 bath, a partially finished basement and (78.6 acres) with 70' and 90' Harvestore steel silos, dairy barn, pole barn, equipment sheds. Heavy equipment and worried about road bans? This property is located on the highway. Multi-family living at its finest! Measurements approx buyer to verify if deemed important (id:6769)

Kristin Houghtaling

Royal LePage Aspire Realty

Phone: (250) 640-1950



RE/MAX Kelowna
100-1553 Harvey Avenue
Kelowna, BC,
Canada