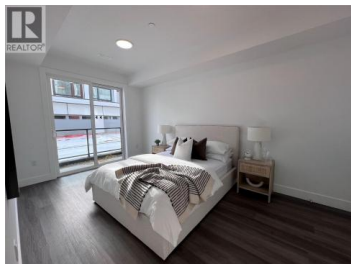
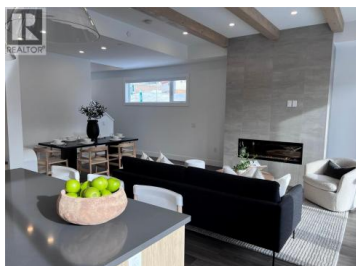


## 2100 CAMPBELL Road 170 West Kelowna British Columbia

Lakeview Heights

**\$1,534,900**



This Shelter Bay Kelowna Townhome is our D Elevator floorplan in our Tide colour scheme. This is an incredible 2,450 square foot home featuring, 4 large bedrooms and 3.5 bathrooms, plus a huge 569 square foot roof top terrace and a spectacular view of Okanagan Lake. This home comes with a residential elevator that services all floors including your rooftop patio, side-by-side double car garage, open concept living plan, luxuriously finished with exposed wood beams, high-end appliances and fixtures. Available now! . You'll love it here! (id:6769)

**Ceinwen Morgan**

Oakwyn Realty Okanagan

Phone: (250) 215-9221



**RE/MAX Kelowna**  
100-1553 Harvey Avenue  
Kelowna, BC,  
Canada