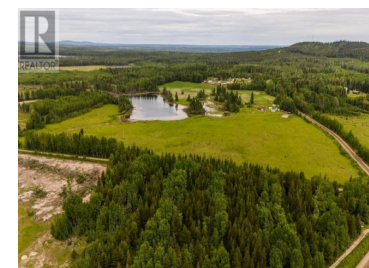




17045 MCBRIDE TIMBER Road Prince George British Columbia

\$244,900



* PREC - Personal Real Estate Corporation. What a stunning opportunity to own a piece of paradise. This nearly 40 acer property is fenced for horses, has multiple out buildings that are set up for horses or other farming ideas. There is 200 amp service and an awesome out house already in place. that makes this a great spot to set up over summer and build your dream home. Large parcel like this that are ready to go do not come around every day. Do not miss your chance to buy a property with lots of the heavy lifting already done. Lot size taken from tax assessment, all measurements are approximate buyer to verify if deemed important. (id:6769)

Kenzie Brown

Royal LePage Aspire Realty

Phone: (250) 564-4488



RE/MAX Kelowna
100-1553 Harvey Avenue
Kelowna, BC,
Canada