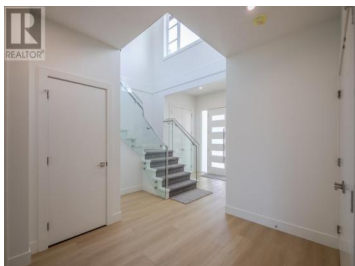




1724 TREFFRY Place Summerland British Columbia
 Trout Creek
\$1,138,000



New Year, New Opportunity! Discover the perfect blend of style and functionality in this newly constructed home, featuring a bright and spacious floor plan with 6 bedrooms and 4 bathrooms. Enjoy 9' ceilings throughout, enhancing the sense of space and elegance. The legal 2-bedroom suite on the lower level, complete with its own entrance and laundry, offers versatile living options or a potential rental income stream. The home boasts two well-equipped kitchen packages with quartz countertops and LVL floors, making it ideal for both everyday living and entertaining. From the upper balconies, take in the serene mountain and orchard views, adding a touch of nature to your daily life. Located conveniently near beaches, parks, and schools, this property embodies the best of both luxury and practicality. You won't need to look any further for your dream home! (id:6769)

Dawn Boothe

Parker Real Estate

Phone: (250) 488-3032

<http://dawndreambuilder.com/>



RE/MAX Kelowna
 100-1553 Harvey Avenue
 Kelowna, BC,
 Canada