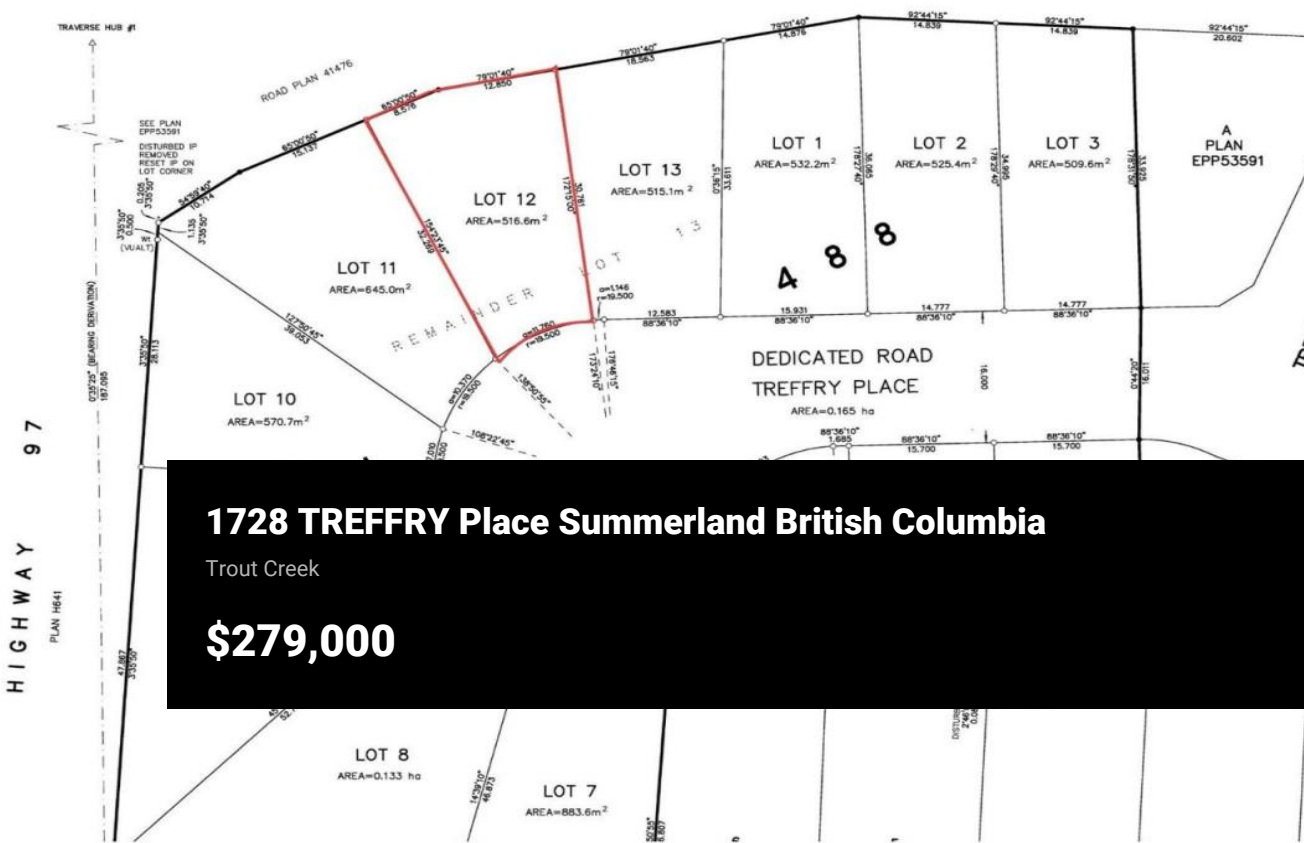




JOHNSON

THE INTENDED PLOT SIZE OF THIS PLAN IS 864mm IN WIDTH BY 460mm IN HEIGHT (D SIZE) WHEN PLOTTED AT A SCALE OF 1:300



1728 TREFFRY Place Summerland British Columbia
 Trout Creek
\$279,000



Build your dream home in one of Trout Creek's most desirable new development areas. This prime lot offers the perfect blend of peaceful community living and everyday convenience. Just a short walk or bike ride brings you to the beach, where you can enjoy sunny Okanagan days by the water, while nearby schools make this an ideal location for families. Situated only minutes from Penticton, you'll have quick access to shopping, dining, wineries, and all the amenities the South Okanagan has to offer--while still enjoying the quieter pace and charm of Trout Creek. This property is a fantastic opportunity to invest in a thriving area and create a space tailored entirely to your vision. Whether you're looking to build now or hold for the future, this lot delivers location, lifestyle, and potential. (id:6769)



RE/MAX Kelowna
 100-1553 Harvey Avenue
 Kelowna, BC,
 Canada

Celeste Burechailo

RE/MAX Penticton Realty

Phone: (778) 559-2527

