

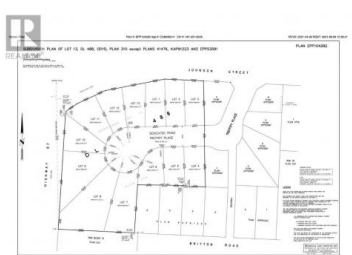
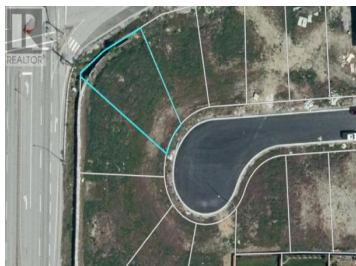
1732 Treffry Place Summerland British Columbia

Trout Creek

\$319,900



Build your home within easy walking distance to Okanagan Lake, Powell Beach, Sunoka Beach, in the desirable community of Trout Creek. All services are at the lot line: water, sewer, power and natural gas. A flat, easy to build site with 6943 sq. ft. Homes in this neighbourhood can be built 2 1/2 stories above grade and legal suites are allowed. The zoning bylaws allow for stratified Duplexes. You have the freedom to bring your own builder and timeline with this opportunity! GST is applicable. (id:6769)

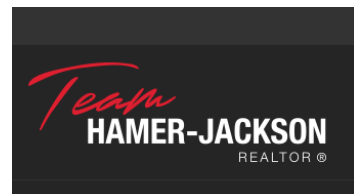


Shelley Parker

Parker Real Estate

Phone: (250) 490-6302

<http://parkerproperty.ca/>



RE/MAX Kelowna
100-1553 Harvey Avenue
Kelowna, BC,
Canada