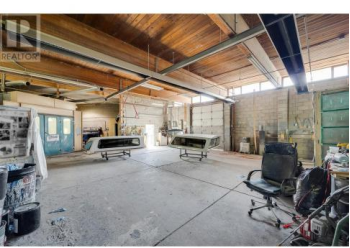




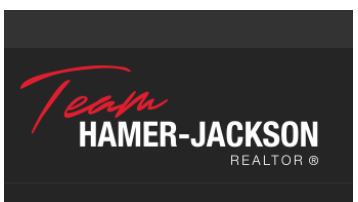
17411 Bentley Road Summerland British Columbia
 Summerland Rural
\$1,750,000



Prime Industrial Space Alert! Discover this 5097 sqft gem boasting 3 garage overhead doors for seamless access. Currently leased until October 31, 2026. The property has been recently spruced up by tenants, showcasing its full potential. The space is now open as one large unit instead of two like the virtual walk through and pictures. The paint bays have also been removed adding tons of space and openness. Situated just off the highway with paved access, this is a rare find in the Okanagan's competitive Industrial market. Act fast - opportunities like this don't last! (id:6769)



Curtis Gedig
 Coldwell Banker Horizon Realty
 Phone: (250) 899-1442



RE/MAX Kelowna
 100-1553 Harvey Avenue
 Kelowna, BC,
 Canada