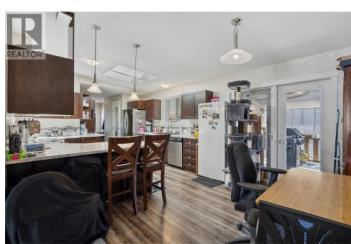
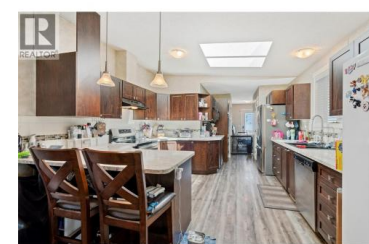
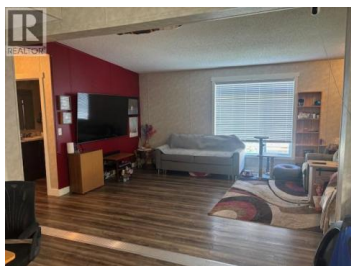




9020 Jim Bailey Road 175 Kelowna British Columbia

Lake Country East / Oyama

\$399,500



6 MONTHS FREE PAD FEE! Affordable living in a great location in this 2017 Double Wide SRI Manufactured Home with 1650 sq. feet of living space. Why rent when you can own this 3+ bedrooms and 2 bathrooms modern home on a no thru road in the centrally located and desirable Belaire Estates. This very well maintained and managed park has a rare secure 99 year lease(until 2114). As you walk in to the generous foyer you will notice the open concept living with a large kitchen, dining room, office/den, laundry and a bright living room. The kitchen has beautiful wood cabinets, LOTS of counter space, stainless steel appliances and even has a second built-in oven for hosting those family gatherings. The very spacious primary bedroom has a sitting area and a large 4 piece ensuite. Outside you will enjoy the large covered deck, carport, wheelchair ramp, extra deck for a hot tub, shed and a fenced in maintenance free yard with several planter boxes and irrigation. Water treatment includes a water softener, a built in charcoal filter and reverse osmosis. The house has a newer hot water on demand system and a natural gas forced air furnace along with heat pumps in the rear bedrooms to ensure maximum comfort. Belaire Estates has no age restrictions and is minutes to schools, shopping, breweries, the Rail Trail, beaches, wineries and more. (id:6769)

Dan Brunel

Royal LePage Kelowna

Phone: (778) 214-3171



RE/MAX Kelowna
100-1553 Harvey Avenue
Kelowna, BC,
Canada

