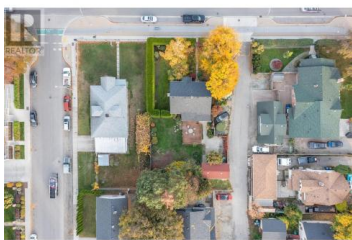


1754 Ethel Street Kelowna British Columbia

Kelowna South

\$899,900



.23-Acre Development Lot with Assembly Potential. This is your chance to secure a .23-acre development lot in a rapidly evolving area just minutes from downtown Kelowna. Ideally suited for townhome development under the new Official Community Plan, this property offers excellent potential for investors and builders alike. What makes this opportunity even more attractive is the potential for a land assembly with the neighboring lot (MLS 10351195)-- together offering nearly half an acre of prime development space. Whether you're looking to build and hold, develop a small-scale multi-unit project, or explore a larger assembly opportunity, this property is well-positioned for growth. Enjoy close proximity to schools, shopping, parks, and transit in one of Kelowna's most sought-after infill locations. Don't miss your chance to invest in a high-potential site with both standalone and assembly value. (id:6769)

Chris Sereda

Real Broker B.C. Ltd

Phone: (250) 575-4804

<http://www.kelownahomes.com/>



RE/MAX Kelowna
100-1553 Harvey Avenue
Kelowna, BC,
Canada