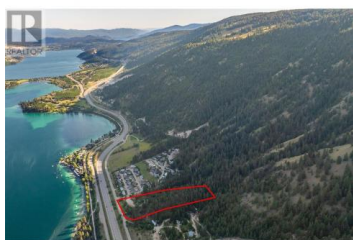
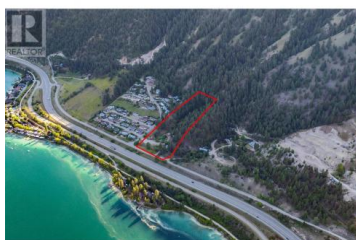




17680 Rawsthorne Road Lake Country British Columbia

Lake Country East / Oyama

\$759,900



Presenting a stunning 9.671 acre lot overlooking the pristine waters of Kalamalka Lake. A rare offering of location, size & unparalleled lake views - a stunning canvas to build & design your sprawling custom dream-home! With an abundance of trees for creating a private retreat & paved easy access city roads to your driveway plus many services hooked up - this is a one-of-a-kind opportunity. The location is second to none nestled in the Okanagan Valley, Lake Country is highly desired for its luxurious yet relaxed environment. A region acknowledged for its world renowned wineries, flourishing orchards, world class restaurants, golfing, beaches & more! The lush valley of Lake Country also boasts top caliber parks and trails - minutes to the new Okanagan Rail Trail, 13min to top-rated Predator Ridge Resort. 20 minutes to Kelowna International Airport. It offers all seasons fun with Silver Star Mountain Resort 40 min away. Property is currently zoned RR1 - zoning for residential development on large lots & complementary uses. This allows for building compliant with the districts zoning bylaw such as one single detached house (which may contain a secondary suite); accessory buildings or structures (which may contain an accessory suite). A mobile or manufactured home as an accessory suite. Live out your future dream of creating a home business, bed & breakfast, flower farm etc. Co...



RE/MAX Kelowna
 100-1553 Harvey Avenue
 Kelowna, BC,
 Canada

Nicole McGillis

Oakwyn Realty Okanagan

Phone: (250) 863-0526

