

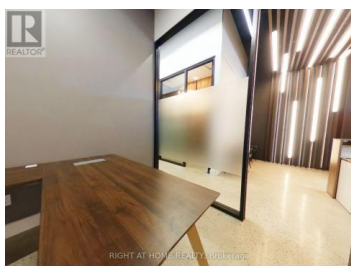
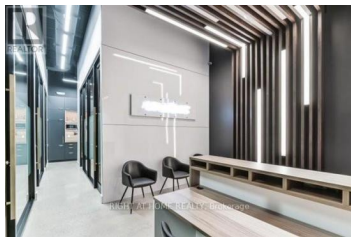


## 20 Wertheim Court 18 Richmond Hill Beaver Creek Business Park Ontario

Beaver Creek Business Park

# \$798,000

RIGHT AT HOME REALTY, Brokerage

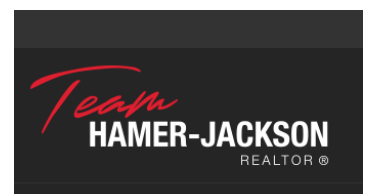


Turn-key investment Alert, ~\$50K NET annual income. High-End Medical spa business in West Beaver Creek, in the heart of Richmond Hills business district. Current tenant is on a 5 year lease that will end June 30, 2029. Tenants have one 5 year option to renew. See attached operating statement for this property. One of the lowest maintenance fees in the GTA, with updated common elements. Steps from York Region Rapid Transit and major HWYs. Great first investment property or addition to portfolio. Lease/financials will be made available during conditional period. \*\*\*\* EXTRAS \*\*\*\* Approximately 1000 SQFT flexible space with 14' ceilings and 10' high glass partitions. Acoustically insulated walls and privacy band on glass provides added comfort. (id:6769)

**REZA DADASHI**

RIGHT AT HOME REALTY

Phone: (416) 391-3232



**RE/MAX Kelowna**  
100-1553 Harvey Avenue  
Kelowna, BC,  
Canada