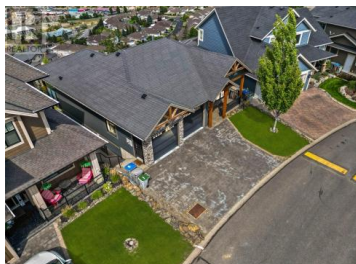
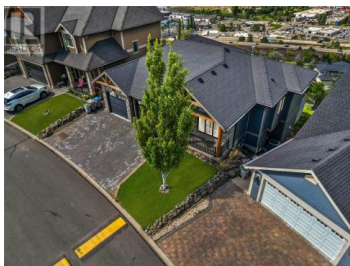


460 AZURE Place 18 Kamloops British Columbia

Sahali

\$999,900



Immaculately maintained custom-built executive rancher in Mesa Estates. This 4-bed, 3-bath home offers 3,165 sq.ft. of refined living with 10' ceilings, handscraped engineered hardwood, and premium finishes. The chef's kitchen boasts Silestone & granite counters, butler's pantry, and induction cooktop (optional Dacor gas stove). Custom wood black aluminum-clad windows frame one of the best views in all of Kamloops--city, river & valley panoramas that must be seen in person. The walkout basement includes a media room, gym & bonus space. The oversized garage has radiant in-floor heat & dual floor drains--ideal for winter. Ensuite also features heated floors, walk-in closet and laundry shoot. Driveway fits 3 across. Bareland strata fee \$175/mo includes trailer parking. This remarkable home is priced to sell. Reach out to the listing agent to book your showing! (id:6769)

Nate Goshorn

Royal LePage Westwin Realty

Phone: (250) 318-0605



RE/MAX Kelowna
100-1553 Harvey Avenue
Kelowna, BC,
Canada