

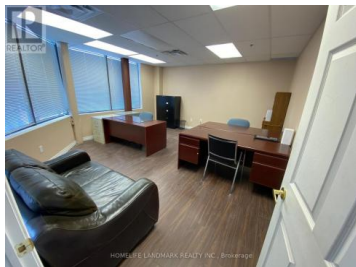


## 60 West Wilmot Street 18 Richmond Hill Beaver Creek Business Park Ontario

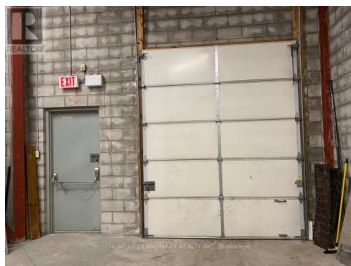
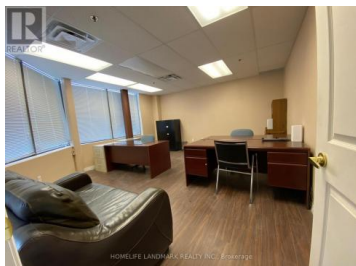
Beaver Creek Business Park

# \$20

HOMELIFE LANDMARK REALTY INC., Brokerage



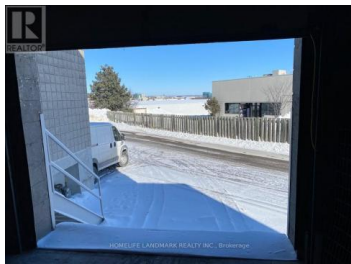
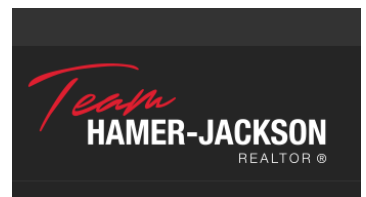
Well maintained industrial unit in the Beaver Creek business area. Easy access to Highways 404 & 407. 2930 SF on the ground floor. Excellent office/showroom layout. Industrial area has racking & excellent truck level shipping with 53' Trailer access. Clean storage and distribution uses only. No fresh food, woodworking, stone cutting or recreational uses. (id:6769)



### SIMON DING

HOMELIFE LANDMARK REALTY INC.

Phone: (416) 399-0062



RE/MAX Kelowna  
100-1553 Harvey Avenue  
Kelowna, BC,  
Canada