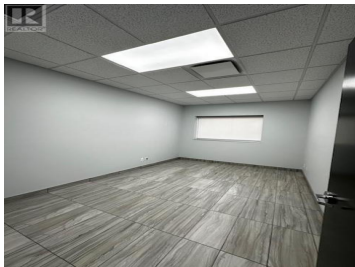
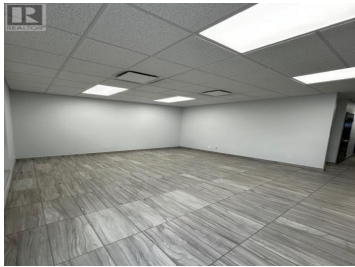




## 830 McCurdy Place 18 Kelowna British Columbia

Rutland North

# \$16

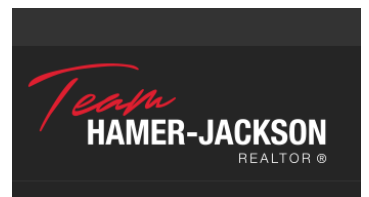


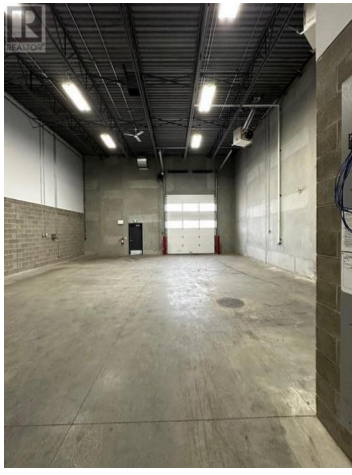
Central location, Triple A building. Warehouse 1,674 sq ft office 1,198sq ft Mezzanine 1,198 sq ft with windows. loading at grade and complex has docking loading also. lots of parking at the front of the building & large area behind warehouse. (id:6769)

**Gordon Anton**

RE/MAX Kelowna

Phone: (250) 212-5545





**RE/MAX Kelowna**  
100-1553 Harvey Avenue  
Kelowna, BC,  
Canada