



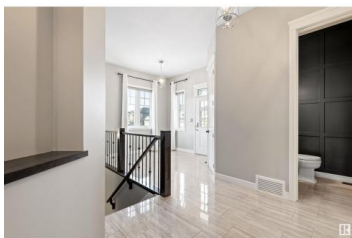
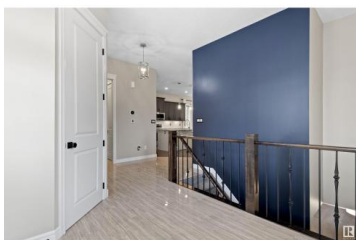
Edmonton Alberta

Ambleside

\$750,000



Luxury Bungalow offers nearly 3,000 sq.ft. of elegant living space, perfect for downsizing boomers or families seeking room for everyone. The main floor dazzles with gorgeous hardwood, custom blinds, 10' ceilings, and 8' doors, giving a sense of grandeur. A chef's kitchen features high-end cabinetry, stainless appliances, a granite island and walk-THROUGH pantry! Relax in the spacious primary bedroom with a spa-like ensuite and walk-in closet. The fully finished lower level is ideal for family or guests, with a large family room, custom built-ins, THREE LARGE BEDROOMS with full-size windows, a 4-piece bath, and plenty of storage. Outside, enjoy a PRIVATE SOUTH corner lot with a walking path, oversized deck, patio with custom lighting, and maintenance-free landscaping. Heated Oversized GARAGE 19'5x25'5. Fantastic Condition Throughout - close to Top Rated Schools, Shopping and Amenities at the Currents of Windermere!! (id:6769)



Ricky D. Hill

RE/MAX Elite

Phone: (780) 718-5608

<http://www.riverbendricky.com/>



RE/MAX Kelowna
100-1553 Harvey Avenue
Kelowna, BC,
Canada