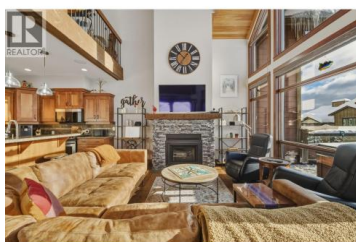




## 180B Grizzly Ridge Trail Big White British Columbia

Big White

**\$899,900**



Welcome to Grizzly Ridge Estates! This is the original show home for the development and spares no detail in the quality of construction and thoughtful design. When you think of ski chalet, this is exactly what comes to mind. On the main floor you will find the vaulted and lofted main living space including Kitchen, living and Dining rooms, 2 spare bedrooms, a 3 piece bathroom with heated tile floors, plus floor to ceiling windows overlooking the large deck and views of the Monashee mountains. Walk upstairs to the spacious loft area with a fold out couch which continues into the massive Primary bedroom complete with its own gas fireplace, small patio and 4 piece ensuite with heated tile floors, dual vanity, walk in tile shower and water closet. On the lower level you will find the main entrance with in floor hot water heat throughout (including inside the garage), wine cellar under the stairs, laundry area, utility room and your oversized 2 car garage (28'x21') plus room for 4 vehicles outside in your private driveway. Low strata fee's are a bonus with the annual total for 2025 being just \$923.43 (\$76.95/mo but paid on an annual basis). (id:6769)

**Mike Kirk**

RE/MAX Kelowna

Phone: (250) 864-5475

<http://www.kirks.ca/>



**RE/MAX Kelowna**  
100-1553 Harvey Avenue  
Kelowna, BC,  
Canada

