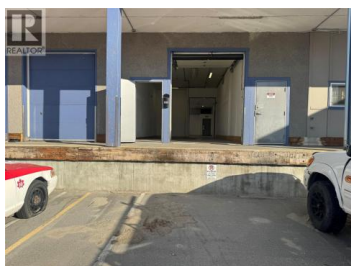
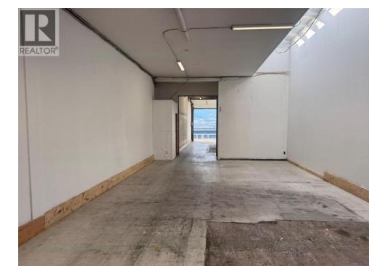




1840 Government Street Penticton British Columbia

Industrial Area

\$15



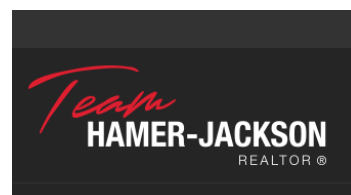
Location. Location, Location! +/- 1319 sq ft of M1 zoned space for lease with a loading dock is centrally located in Penticton. Fronting onto Government Street, this space is close to Penticton Regional Hospital and the Innovation District. Zoning allows for mixed general and light industrial usages from contractor space, storage, wholesale & warehouse storage, cold storage for wine, warehouse space, motor repair, restaurant and much more. Triple Net cost is approx \$5.00/sq ft which includes p.tax, insurance & snow removal. Space has no water. (id:6769)

Jonathan Wall

Engel & Volkers South Okanagan

Phone: (604) 202-3771

<https://jonathanwallrealestate.com/>



RE/MAX Kelowna
100-1553 Harvey Avenue
Kelowna, BC,
Canada