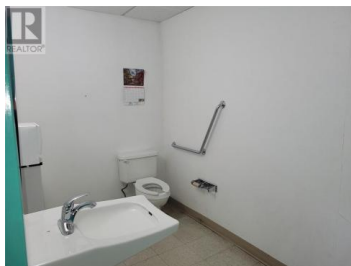
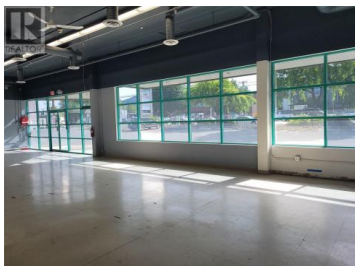
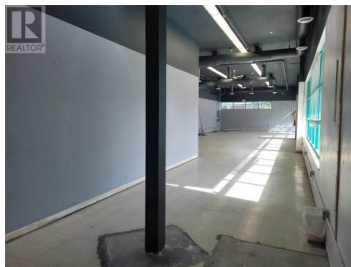


1850 Kirschner Road Kelowna British Columbia

Springfield/Spall

\$25



1850 Kirschner Rd., located in the highly desirable Landmark area, offers a prime corner unit with unmatched visibility and accessibility--ideal for retail, showroom, or service businesses aiming to establish a strong local presence. Situated at a busy intersection, this space benefits from high vehicular and pedestrian traffic, ensuring maximum exposure for your brand. The approximately 1,739-square-foot unit features an open layout with soaring 20-foot ceilings, creating a spacious, inviting atmosphere for customers. Large windows and extensive glazing fill the space with natural light, enhancing the shopping or service experience. Ample parking for clients and guests makes visiting convenient, encouraging repeat business. Additionally, a weekly farmers market held every Saturday directly in front of the property drives consistent foot traffic, offering a unique opportunity to attract new customers. The unit has its own gas and electrical meters, providing control over utilities, and is equipped with two rooftop gas heat and electric cooling units for year-round comfort. This efficient climate control system supports energy savings and operational cost efficiency. Whether you're launching a boutique retail store, specialty food shop, or service business, this versatile space offers the perfect environment for growth. (id:6769)



RE/MAX Kelowna
100-1553 Harvey Avenue
Kelowna, BC,
Canada

Samantha Ashly

Macdonald Realty

Phone: (250) 448-5008

