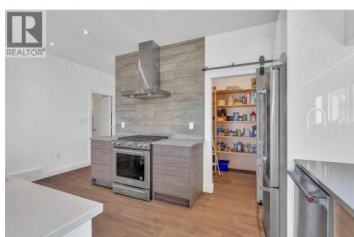


## 186 AVERY Place Penticton British Columbia

Wiltse/Valleyview

# \$1,575,000



AVERY Place - A family home located in a very desirable cul-de-sac in Penticton. Fully equipped, well maintained rancher. Two floors with 3300 SF of living space. Has lots to offer. 5 bed, 4 bath home situated in a modern development, with views of the city, mountains & 2 lakes. Minutes away from downtown shopping, seconds away from schools. walking trails, beaches, wineries and if needed, the hospital. Out of towners will be happy to know we have an airport & quick access to Hwy 97. Features of the home are 9 ft ceilings, contemporary stylings, a den that can be a bedroom, a wine room, two ensuites and walk-in closets, floating vanities, double sinks, gas FP, 2 laundry sets, larger than usual garage, RV parking, full length covered deck on main level with access from living room and primary bedroom, glass railings, BBQ hookups on both levels. The lower level will provide a 2-bedroom suite that can be expanded to 3. Second large sharable laundry in basement and a complete professional kitchen, with a separate entry. 2 HW tanks, lower-level covered deck adds to the living space. Spacious backyard has ROOM FOR A POOL. Flat yard with a view, irrigation system, and iron fencing. Access from upper deck too. It's a family home, it's a place for the grown kids, the folks, or to earn additional income if desired. It's all possible, moments away from hospital for nursing staff tenan...



**RE/MAX Kelowna**  
100-1553 Harvey Avenue  
Kelowna, BC,  
Canada

### Chad Wozniak

Chamberlain Property Group

Phone: (250) 488-3304

<http://www.realtorchad.ca/>

