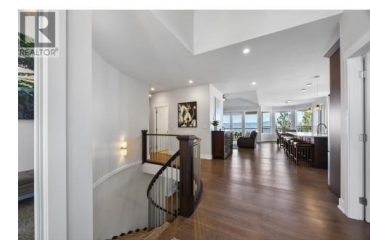




187 Coppertree Court Kamloops British Columbia

Sahali

\$1,649,000



Experience this centrally located, fully updated level-entry executive rancher overlooking nearly all of Kamloops -- city, river, mountains, and the north valley. Backing onto Peterson Creek Park, this home on sought-after Coppertree Court offers sweeping 180-degree views that are truly unmatched in location and scenery. RV parking is available for all your toys. Inside, a grand 12-foot entry ceiling and elegant curved staircase welcome you into an open-concept great room with vaulted ceilings, walls of windows, and breathtaking views. The stunning kitchen features stone counters, soft-close cabinetry, stainless steel appliances with a gas range, and a large corner pantry. Step out to the mostly covered deck with a natural gas BBQ hookup -- perfect for entertaining while soaking in the views. Extensive upgrades include: kitchen and all bathrooms, engineered hardwood throughout, custom curved stair rails, built-ins, fireplace, light fixtures, fresh paint, and EV charging. The main floor offers a spacious primary bedroom with a 6-piece ensuite and walk-in closet, a second bedroom, 4-piece bath, and laundry leading to an oversized 2-car garage (23'5x23'3). The lower level features a large family room, two bedrooms, a 4-piece bath, storage, and additional unfinished space under the garage. In-floor radiant heat, an air exchanger for summer cooling, underground sprinklers, raised...



RE/MAX Kelowna
100-1553 Harvey Avenue
Kelowna, BC,
Canada

Jerri Van

Royal LePage Westwin Realty

Phone: (250) 319-7008

<http://jerrivan.com/>

