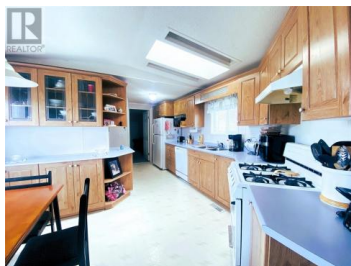
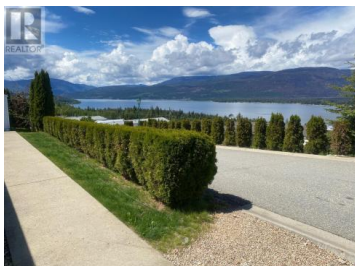




## 1510 Trans-Canada Highway 19 Sorrento British Columbia

Sorrento

**\$225,000**



SHUSWAP RETIREMENT LIVING AWAITS! Welcome to #19 a 2 Bed / 2 Bath manufactured home boasting expansive views of Shuswap Lake, located in desirable Deer Ridge Estates 55+ MHP. This 938 square foot Winalta Ridgewood single-wide home has a functional layout for a relaxing lifestyle. Roomy Kitchen with skylight has plenty of cabinetry and counter space and is open to Dining Area with large lake-view window. Etched glass wall divider gives an open feel between Dining and Living Rooms. Arched window in the bright, spacious Living Room with built-ins also showcases the panoramic lake and mountain views. Primary Bedroom has full 4 pc Ensuite with jetted tub, a Walk-in Closet, and of course: a lakeview window! 2nd Bedroom with bay window is at the opposite end of home, with a 4 pc Bathroom right beside it. Main Entrance opens into Living Room, and 2nd Entrance into the combination Laundry/Mud Room. Both Entrances lead out to a concrete lake view Patio: the perfect place to enjoy your morning coffee, or an evening glass of wine. At the end of the patio, find a convenient storage Shed. Open parking for 2 vehicles on the gravel driveway. Easy care landscaping. Pets allowed with restrictions. Deer Ridge Estates offers an excellent situation for seasonal or year-round living. Easy access to the TCH and just minutes to Golf, Beaches, Marinas, Trails and Amenities. Located roughly half ...



**RE/MAX Kelowna**  
100-1553 Harvey Avenue  
Kelowna, BC,  
Canada

### Desmond Arens

Fair Realty (Sorrento)

Phone: (250) 318-2490

<http://www.arenso Realty.com/>

