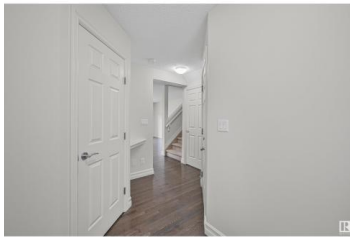




Edmonton Alberta

Charlesworth

\$354,800



One look will do! Welcome home to this wonderful freshly painted half duplex. The open floor plan features a spacious main floor with hardwood floors. As soon as you enter you are greeted by a large entrance and a 2-piece main bath. The kitchen has a large island, plenty of cabinets, Black appliances and a corner pantry. The dining area features sliding doors to the deck and backyard. Bright and spacious living room has pot lights. Upstairs has 3 bedrooms with the primary bedroom that holds a king-size bed & a 3 piece ensuite, the other 2 bedrooms can hold queen beds, the 4 piece bathroom has lots of counter space and completing this floor is your laundry room. Located close to all amenities. A must to see!! (id:6769)



Alan H. Gee

RE/MAX Elite

Phone: (780) 498-2187

<http://www.alangee.com/>



RE/MAX Kelowna
100-1553 Harvey Avenue
Kelowna, BC,
Canada