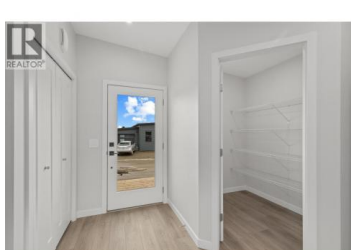




8900 Jim Bailey Road 190 Kelowna British Columbia

Lake Country East / Oyama

\$485,000



Welcome to Deer Meadows, a vibrant and well-connected neighbourhood just steps from the Rail Trail, offering direct access to Wood Lake and the crystal-blue waters of Kalamalka Lake. Enjoy miles of scenic trail systems stretching from Vernon to Kelowna, all while being only a quick 10-minute drive to Kelowna International Airport and UBCO. This thoughtfully designed Monarch home, built by Woodland Crafted Homes, features a modern layout and distinctive exterior appeal. Offering 3 bedrooms and 2 bathrooms, the design is ideal for those seeking both style and functionality. Enter through the bright front patio into an open-concept kitchen and highly sought-after seamless living and dining space—perfect for everyday living and entertaining. The guest bedroom and spacious primary suite are positioned at the rear of the home, creating optimal space distribution and added privacy. Unlike other models, this home includes a full garage, providing secure parking and additional storage. The secluded, fully fenced backyard is designed to capture maximum sunshine, allowing homeowners to fully enjoy the Okanagan lifestyle. Rentals and pets are permitted, and short-term rentals are allowed, making this an excellent opportunity for both homeowners and investors alike. (id:6769)

Keith Watts

RE/MAX Kelowna

Phone: (250) 864-4241

<http://www.keithpwatts.com/>



RE/MAX Kelowna
100-1553 Harvey Avenue
Kelowna, BC,
Canada

