



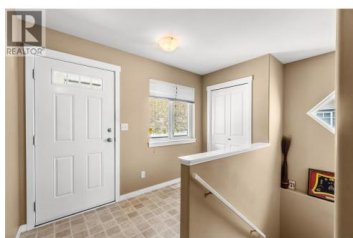
RE/MAX REALTOR®



1914 Snowberry Crescent Kamloops British Columbia

Pineview Valley

\$775,000



Welcome to 1914 Snowberry Crescent! This well-maintained rancher backs directly onto a peaceful greenbelt, with a creek flowing just beyond the backyard fence, offering a private and serene setting. The main floor features an open-concept kitchen, living, and dining area, along with two bedrooms, two full bathrooms, and convenient main-floor laundry. Downstairs, you'll find a one-bedroom in-law suite that was professionally constructed in 2019, a full bathroom, a second bedroom, and two storage areas. With minimal modifications, the in-law suite could easily be converted into a full two-bedroom suite. Major updates have already been completed, including a new furnace (2021), hot water tank (2021), air conditioner (2023), and upstairs toilets (2024). The big-ticket items are done, allowing you to move in with confidence. Don't miss your opportunity to own this lovely home in a beautiful setting--schedule your private showing today! (id:6769)



Twyla-Lea Jensen

Real Broker B.C. Ltd

Phone: (778) 694-6694



RE/MAX Kelowna
100-1553 Harvey Avenue
Kelowna, BC,
Canada