



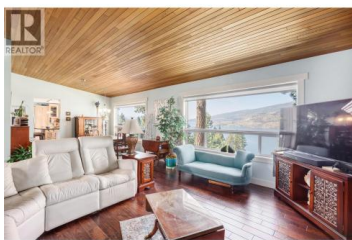
1928 Paly Road Kelowna British Columbia

McKinley Landing

\$899,000



Fantastic family home with lots of privacy, tons of parking and fantastic lake views. Rancher walk-out with 3 Bedrooms up, 2 Bedrooms down including a spacious 1 Bedroom in-law suite. Upstairs is bright, spacious and full of updates and huge windows with views of Okanagan Lake from anywhere you plan to sit and relax. Custom kitchen with SS appliances, a small island and access to the back deck and main level yard space. Updated propane furnace that can later be converted to natural gas when the time comes. The laneway access and oversized lot (0.35 acres) offers tons of parking across the way for toys, campers and tents. (id:6769)



Steve Kirk

RE/MAX Kelowna

Phone: (250) 317-2854

<http://www.kirks.ca/>



RE/MAX Kelowna
100-1553 Harvey Avenue
Kelowna, BC,
Canada