



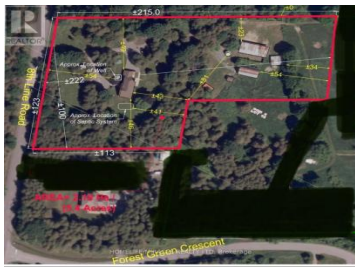
1929 8th Line Road Greely Metcalfe Osgoode Vernon and Area 1602 M Ontario

1602 - Metcalfe

\$1,399,000



HOMELIFE/MIRACLE REALTY LTD. Brokerage



Unique 3,000 sq. ft. English Tudor-Style Country Estate - Embrace the charm and elegance of this one-of-a-kind, 6-bedroom estate, nestled on a sprawling 5-acre property just 20-25 minutes from downtown Ottawa. This beautifully updated home is perfect for those seeking both modern convenience and countryside tranquility. Enjoy approximately 3,000 sq. ft. of thoughtfully designed living space, with recent updates that ensure both comfort and functionality. The property includes a horse stable with a spacious open loft and multiple versatile barns, ideal for hobby farming or equestrian pursuits. A productive, private office area with separate front and back entrances is perfect for those working from home or meeting clients. Recent updates include : New cabinets, quartz countertops, and stainless steel KitchenAid appliances. Updated floors on the entire first level. Pot lights installed throughout the home; freshly painted interiors add a vibrant touch. Upper deck freshly finished, providing a serene outdoor space surrounded by trees for ultimate privacy. A newly added 3-piece bath, main floor laundry (2022), and second-floor laundry (2022). With a layout that seamlessly blends function and charm, this home has been meticulously updated to meet modern needs while retaining its classic appeal. Surrounded by nature, it offers the perfect balance of privacy and accessibilit...



RE/MAX Kelowna
100-1553 Harvey Avenue
Kelowna, BC,
Canada

PREETI SALUJA

HOMELIFE/MIRACLE REALTY LTD

Phone: (480) 676-7092

