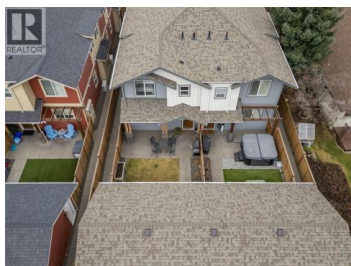




1940 Ethel Street Kelowna British Columbia

Kelowna South

\$718,000



Experience relaxed, connected Kelowna living in this beautifully maintained townhome crafted by Maraine Construction. Thoughtfully designed with a warm, modern aesthetic, the home offers an inviting atmosphere from the moment you step inside. Sunlit living spaces create an easy flow for daily life--perfect for quiet mornings, relaxed evenings, or hosting friends in comfort. The kitchen's quartz surfaces, stainless steel appliances, and gas range set the stage for effortless cooking and gathering. Upstairs, two bright bedrooms--primary with its own ensuite--provide privacy and comfort for homeowners, guests, or renters. A rare advantage in this category, the generous yard offers room to unwind outdoors, garden, or simply enjoy your own slice of city space. With covered garage parking, extra storage (including above-garage storage accessed by pull-down stairs), and efficient heating and cooling, the home delivers convenience without compromise. Situated near transit, schools, and essential amenities--and within a five-minute walk to three different parks with playgrounds--the location unlocks a genuinely walkable lifestyle. Bike or stroll to Pandosy Village or Downtown with ease, supported by direct access to the Ethel biking corridor. Offering style, comfort, and long-term value, this thoughtfully kept two-story townhome is an appealing alternative to condo living--ideal for ...



RE/MAX Kelowna
100-1553 Harvey Avenue
Kelowna, BC,
Canada

John McMahon

Royal LePage Kelowna

Phone: (250) 300-5573

