



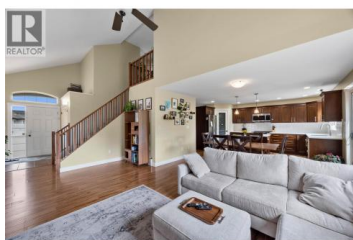
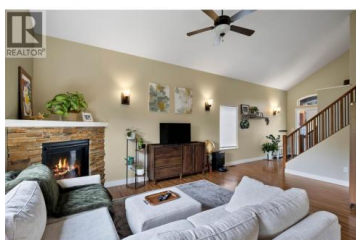
1948 Snowberry Crescent Kamloops British Columbia

Pineview Valley

\$865,000



Backing directly onto greenspace in a unique walk-to-school location, this updated family home combines modern comfort and outdoor lifestyle in one of Kamloops' most desirable neighborhoods. The bright open-concept main floor features a soaring vaulted ceiling and an updated kitchen with quartz countertops, modern tile backsplash, and a new induction range. The dining area opens onto the rear deck, creating the perfect space to relax or entertain while enjoying the peaceful setting. Upstairs, you'll find three bedrooms and two full bathrooms, complemented by a small landing that provides additional flexibility. The walkout basement, finished in recent years, expands the home's living space with an additional bedroom, full bathroom, and spacious rec room with direct backyard access. The under-garage bonus room provides exceptional storage and future potential as a media room or whatever best suits your family's needs. One of the home's standout features is direct access to the trail network and the new elementary school via maintained trails that avoid roads and traffic altogether. Whether heading to school, hiking, biking, or simply exploring the outdoors, the trails begin right at your back gate. Additional highlights include a cold-climate heat pump installed in 2022 for efficient year-round heating and cooling, a dedicated laundry room with new washer and dryer, a 240V ga...



RE/MAX Kelowna
 100-1553 Harvey Avenue
 Kelowna, BC,
 Canada

Sanja Rodger

Royal LePage Westwin Realty

Phone: (250) 299-2523

<https://sanjarodger.royallepage.ca/>

