



1948 Windsor Road Kelowna British Columbia

Springfield/Spall

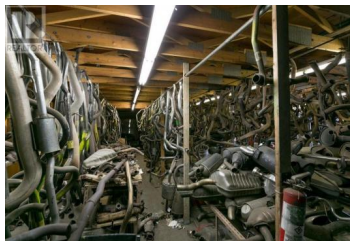
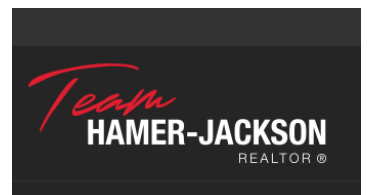
\$25

This is your opportunity to operate your business from this established automotive shop, now available for lease. Property includes 6,689sf +/- over two floors including four bay shop, showroom, offices and a second floor area. Centrally located just off of Spall Road. Ideal for automotive related use as the property has a longstanding customer base of over 50 years. (id:6769)

Stefani Lea

Royal LePage Kelowna

Phone: (250) 870-0730



RE/MAX Kelowna
100-1553 Harvey Avenue
Kelowna, BC,
Canada