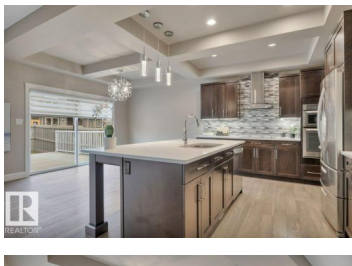
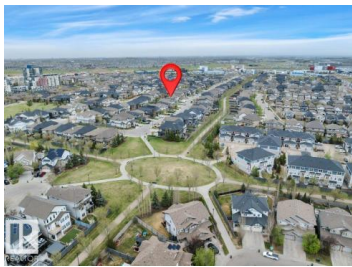




Edmonton Alberta

Ambleside

\$750,000



Beautiful EXECUTIVE 2 storey home with 3600 sqft total living space, low maintenance ARTIFICIAL TURF, DECK!UPGRADED with Brand new CARPET and COUNTER TOP STOVE(2026) , Coved 9' ceiling, HIGHEND Espresso cabinetry, QUARTZ counters, massive ISLAND in the Chef's kitchen with B/I SS appliances, FRENCH door to the large walk thru BUTLER PANTY to the Mudrm leading to the oversized Finished HEATED Garage. GREAT rm with FEATURE GAS FIREPLACE is open to the kitchen, leading to the deck. Main flr Bedrm/DEN with DOUBLE FRENCH doors. Upstairs is the PRIMARY RETREAT, LARGE BONUS rm with feature wall & High VAULTED ceiling, DOUBLE FRENCH DOORS and 2 more bedrms up. The Primary retreat is total lux with 5 pce ENSUITE Bath incl. CORNER SOAKER TUB, LARGE 5' shower, extended 2 sink VANITY across the room is the DREAM W/I CLOSET! The basement is professionally finished with large GAMES/FAMILY rm open to the GYM and has 5th bedroom, 2nd DEN, 3rd full Bathrm with Large TILED shower and beautiful vanity. Near SCHOOL, PARKS & TRAILS! (id:6769)

Debbie A. Smith

RE/MAX Elite

Phone: (780) 722-6480

<http://debbiesmith.com/>



RE/MAX Kelowna
100-1553 Harvey Avenue
Kelowna, BC,
Canada