

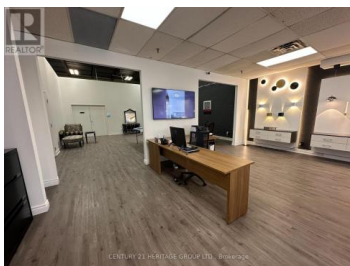
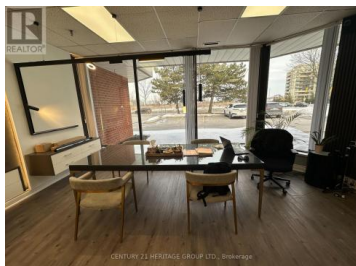


## 135 East Beaver Creek Road 2 Richmond Hill Beaver Creek Business Park Ontario

Beaver Creek Business Park

**\$16**

CENTURY 21 HERITAGE GROUP LTD., Brokerage



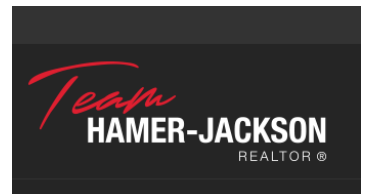
Exceptional sub-lease opportunity in the highly sought-after East Beaver Creek Business Park. This functional industrial unit offers easy access to Highways 404 and 407, ensuring seamless logistics and transportation. Located in a well-maintained building with professional landlord and management, this space is ideal for businesses looking for efficiency and convenience. Features include truck-level shipping, ample parking, and proximity to public transit and major area amenities. Suitable for various industrial and commercial uses. (id:6769)

**FARZIN JAMSHIDI**

CENTURY 21 HERITAGE GROUP LTD.

Phone: (905) 883-8300

<http://www.easysold.ca/>



**RE/MAX Kelowna**  
100-1553 Harvey Avenue  
Kelowna, BC,  
Canada