

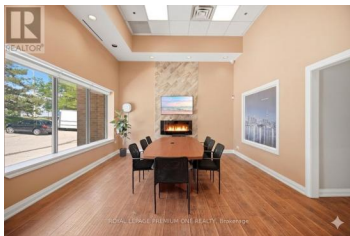
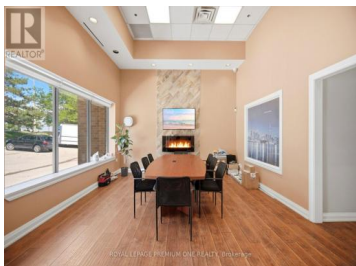
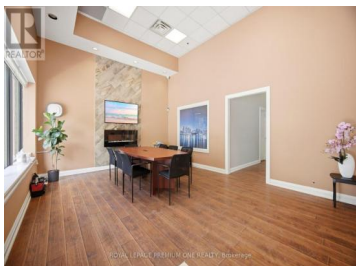
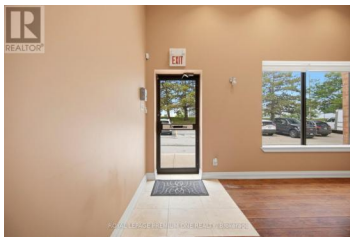


16 Sims Crescent 2 Richmond Hill Beaver Creek Business Park Ontario

Beaver Creek Business Park

\$1,090,000

ROYAL LEPAGE PREMIUM ONE REALTY Brokerage



Don't miss this rare opportunity to secure a high-demand, exceptionally well-maintained office/industrial unit in one of the GTA's premier business corridors - BEAVER CREEK BUSINESS PARK. Boasting outstanding traffic exposure directly facing busy Leslie Street-just seconds from 16th Avenue and close to Hwy 7 this property offers unparalleled signage potential and daily visibility for your brand. Flooded with natural light, this versatile space perfectly blends a premium showroom, functional corporate office space, and a fully equipped warehouse. The showroom features 16 ft foot tray ceiling, wall to wall windows, pot lights, laminate flooring, electric fireplace and wall mounted TV. Spacious private office room offers plenty of space for multiple work stations, a separate file/storage room and includes a large window with one way visibility overlooking front showroom. Kitchenette includes cabinets, sink, mini fridge and full size 3 door upright refrigerator. Large 2pc bathroom. Large warehouse area includes drive in door, pedestrian door, shelving, 60 AMPs, painted garage floor, hvac system, alarm, sprinkler system, 220v line. L-shaped mezzanine offers additional storage space. Maintenance fee includes water. Close to major highways 404, 407. Accessible to Viva. Some photos have been digitally edited to show property vacant. (id:6769)

VANIA BONDI

ROYAL LEPAGE PREMIUM ONE REALTY

Phone: (416) 410-9111



RE/MAX Kelowna
100-1553 Harvey Avenue
Kelowna, BC,
Canada

