

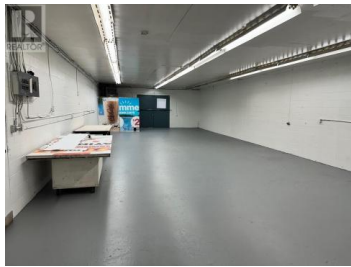
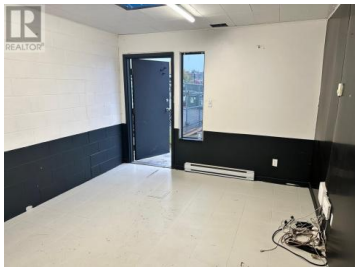
## 2200 18 Avenue 2 Vernon British Columbia

City of Vernon

# \$15



1,790 square foot Shop/Warehouse & Office. Includes a small fenced compound at front of driveway. - Ideal for many light industrial and service commercial uses. Quick possession. 8-foot overhead door, 11ft. ceilings, washroom, plenty of power. Situated at end of cul-de-sac. Easy truck access. (id:6769)

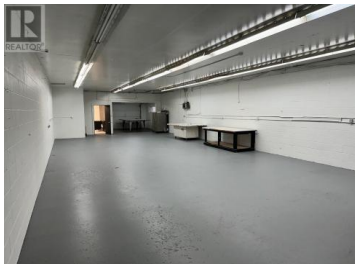
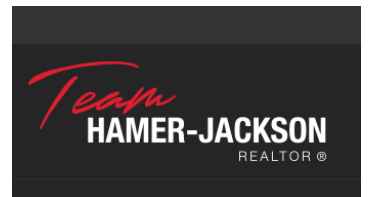


### Ken McCluskey

Royal LePage Downtown Realty

Phone: (250) 308-9300

<http://vernoncommercialproperties.com/>



RE/MAX Kelowna  
100-1553 Harvey Avenue  
Kelowna, BC,  
Canada