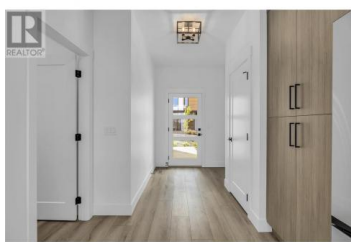
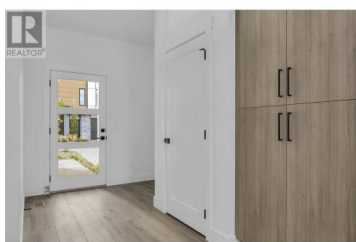


2835 Canyon Crest Drive 2 West Kelowna British Columbia

Shannon Lake

\$924,900



****EDGE VIEW AT TALLUS RIDGE SHOWHOME OPEN SAT & SUN 12-3PM****

Welcome to home #2 at Edge View, a walk-out rancher townhome with amazing views of Shannon Lake - this is your opportunity to enjoy the best of the West Kelowna lifestyle! This home spans approximately 2,418 sq ft and features 2 bedrooms, 2 flex/den spaces, 3 bathrooms, and a double side-by-side garage. With the primary bedroom on the main floor, you'll enjoy easy access to the kitchen, living/dining area, and laundry room. The primary ensuite includes a deluxe soaker tub, double-sink vanity, semi-frameless glass shower, and walk-in closet. The high-end modern kitchen is outfitted with premium quartz countertops, a slide-in gas range, stainless steel dishwasher, and refrigerator. Downstairs, you'll find an additional bedroom and bath, 2 flex rooms, and a large recreation room. Relax on your partially covered deck and lower patio, both with gorgeous views of Shannon Lake! Built with advanced noise-canceling Logix ICF blocks in the party wall for superior durability and insulation. Includes a 1-2-5-10 Year New Home Warranty and meets Step 4 of BC's Energy Step Code. Located just 5 minutes from West Kelowna shopping, restaurants, and entertainment, and close to top-rated schools. Enjoy nearby nature with a small fishing lake, a family-friendly golf course, and plenty of hiking and biking trails. Move in now--No PTT (s...



RE/MAX Kelowna
100-1553 Harvey Avenue
Kelowna, BC,
Canada

Darcy Nyrose

RE/MAX Kelowna

Phone: (250) 575-1946

<http://www.kelownarealestatepros.com/>

