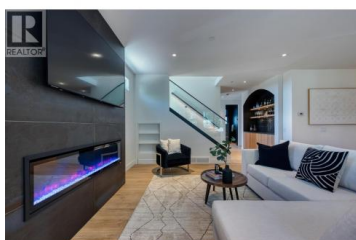
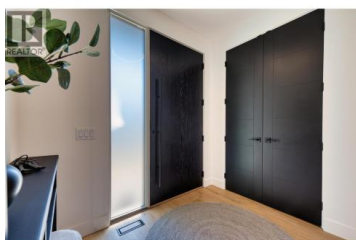




3010 Holland Road 2 Kelowna British Columbia

Lower Mission

\$1,360,000



The Lipkovits Group is proud to introduce Holland Place, a premier five-unit luxury townhome development in one of Kelowna's most sought-after locations. Surrounded by a vibrant mix of restaurants, local shops, parks, golf courses, and schools -- ideal for professionals, students, or anyone looking to live steps from it all. Thoughtfully designed, each of the five townhomes features three bedrooms and two and a half bathrooms, including a spacious primary suite with a spa-inspired ensuite complete with dual vanities, a soaker tub, custom shower, and custom walk-in closet. Inside, you'll find an elevated level of finish throughout -- from custom cabinetry and designer lighting to a striking floor-to-ceiling fireplace and more. Each home includes an attached double garage and access to an expansive private rooftop patio, offering exceptional outdoor living and the perfect setting to host and unwind. Holland Place blends contemporary design, luxury finishes, and a walkable lifestyle -- a rare opportunity in the heart of Kelowna. (id:6769)

Brett Lipkovits

Royal LePage Kelowna

Phone: (250) 215-1052

<https://lipkovitsgroup.ca/>



RE/MAX Kelowna
100-1553 Harvey Avenue
Kelowna, BC,
Canada