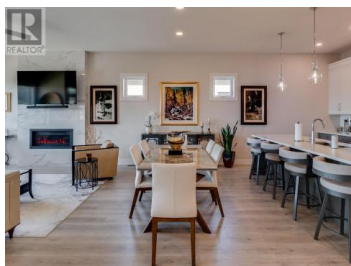
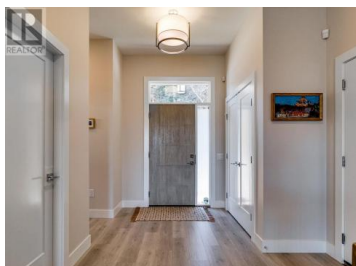




777 Denali Drive 2 Kelowna British Columbia

Dilworth Mountain

\$1,179,000



Welcome to this luxury townhome in the sought-after neighborhood of Dilworth. Perfect for discerning buyers seeking the epitome of comfort. This immaculate home boasts high-end finishes throughout. As you step inside, you're greeted by an inviting ambiance, with a bright and open floor plan that invites natural light to the main floor, creating a welcoming atmosphere of warmth. The main floor features a large primary bedroom retreat complete with a spa-like ensuite. Two additional bedrooms downstairs provide ample space for guests or family members, ensuring everyone has their own private space. Enjoy spectacular mountain, valley and peak-a-boo lake views from the private balcony with remote controlled sunscreens. Home is equipped with a Telus security system, including doorbell and garage cameras. For those who love the outdoors, this townhome offers proximity to golf courses, hiking trails and a myriad of amenities, allowing you to embrace an active lifestyle with ease. With ample storage space, you'll have room to stow away belongings and keep your home clutter-free, allowing you to fully appreciate your home. Minutes to downtown Kelowna and the lake, this townhome holds fantastic value! (id:6769)

Todd Simpson

Royal LePage Kelowna

Phone: (250) 826-7253

<http://www.simpsonrealtors.com/>



RE/MAX Kelowna
100-1553 Harvey Avenue
Kelowna, BC,
Canada

