

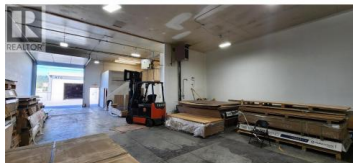
860 Leathead Rd Road 2 Kelowna British Columbia

Rutland North

\$15



Opportunity to Sublease 2,800 SQFT of open, functional warehouse area in central Kelowna. This units offers front office, additional mezzanine storage area, washroom and 14' overhead door at grade level. Sublease expires June 30th, 2027. Available immediately with new head lease options available. (id:6769)

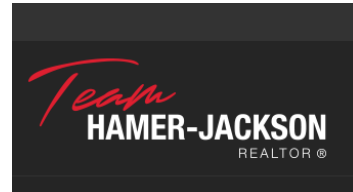


Jason Wills

Venture Realty Corp.

Phone: (250) 300-5477

<http://www.venturecommercial.ca/>



RE/MAX Kelowna
100-1553 Harvey Avenue
Kelowna, BC,
Canada