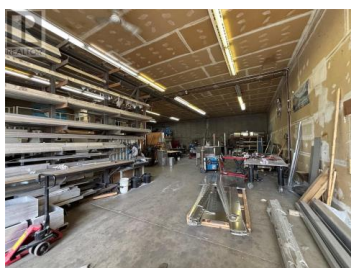
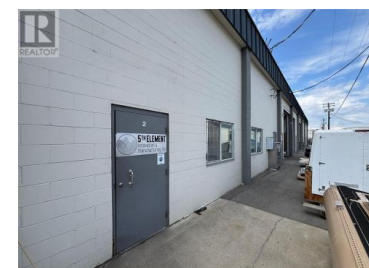




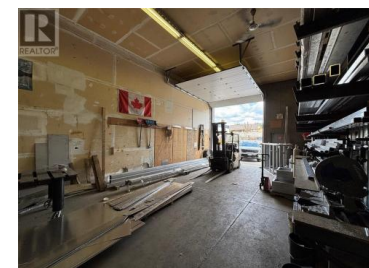
876 Leathead Road 2 Kelowna British Columbia

Rutland North

\$16



5,000 sq. ft. centrally located industrial/warehouse unit available November 1, 2025. Includes office space with reception area and 2 private office. Kitchen/lunch room, 2 washrooms, storage room, and mezzanine storage area. One 12 ft. overhead door. Additional 5,455 sf of secured yard space potentially available. Contact listing agents for more information. (id:6769)

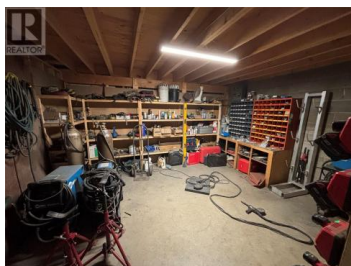
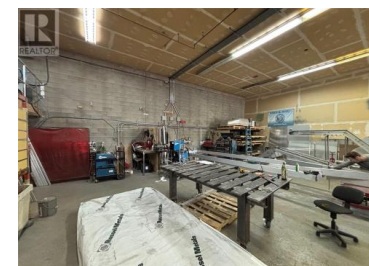


Lee Levering

Venture Realty Corp.

Phone: (250) 258-9430

<http://www.venturecommercial.ca/>



RE/MAX Kelowna
100-1553 Harvey Avenue
Kelowna, BC,
Canada