

Front Elevation

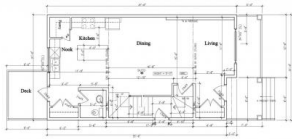
Right Elevation



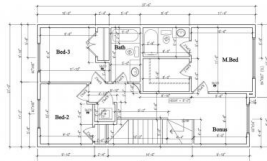
Left Elevation

Rear Elevation

Leduc Alberta
Southfork
\$459,900



Main Floor Plan



Upper Floor Plan



RE/MAX Kelowna
100-1553 Harvey Avenue
Kelowna, BC,
Canada

Welcome to your dream home in the desirable Southfork community of Leduc! This beautifully designed single-family home offers approximately 1550 sq. ft. of modern living space, featuring 3 bedrooms and 2.5 bathrooms. Situated on a corner lot in a cul-de-sac, this home provides both privacy and a welcoming atmosphere. The open-concept layout seamlessly blends style and functionality, with kitchen cabinets extending to the ceiling, quartz countertops, and ample storage. The living and dining areas are perfect for entertaining or cozy family nights. Two striking feature walls add elegance, while 9 ft ceilings on both the main floor and basement create an airy feel. Relax on the charming front porch, ideal for morning coffee or evening sunsets. A separate entrance to the basement offers potential for additional living space or rental opportunities. Southfork offers community parks, winding pathways, lush green spaces, and beautiful water features, blending city living with natural tranquility. (id:6769)

. Karanjot Singh

RE/MAX Elite

Phone: (780) 205-3000

