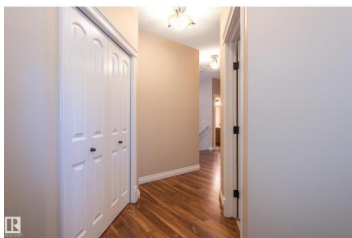


Edmonton Alberta

Glastonbury

\$498,000



Glastonbury Glenn's half duplex bungalow with south facing backyard! Professionally painted and shows like new! This 1437 sq foot home features 2 bedrooms including a primary suite with walk-in closet and 4 piece ensuite. The kitchen offers ample cabinet space and granite counters. The s/s appliances are newer and are included. The island counter is perfect for a breakfast sit up area. The windows and vaulted ceilings allow natural light to fill the room. The dining area features a garden door leading to the private south facing deck. The living room has a fireplace. There is room to accommodate large furniture arrangements. The main floor laundry has included washer and dryer. The lower level offers a large rec. room with finished ceilings and exterior walls including all wiring and lighting. Add your own flooring touches. This condo is located near the end of the complex with minimal traffic and extra visitor parking. Lawn and snow removal included. Some photos are virtually staged. (id:6769)

Dale B. Thronson

RE/MAX Elite

Phone: (780) 909-3253

<http://www.calldale4asale.com/>



RE/MAX Kelowna
 100-1553 Harvey Avenue
 Kelowna, BC,
 Canada